

FUSION

MODULAR DISPLAY SYSTEMS



Anodised
aluminium poles

complete with
carry bag set

Single or double sided



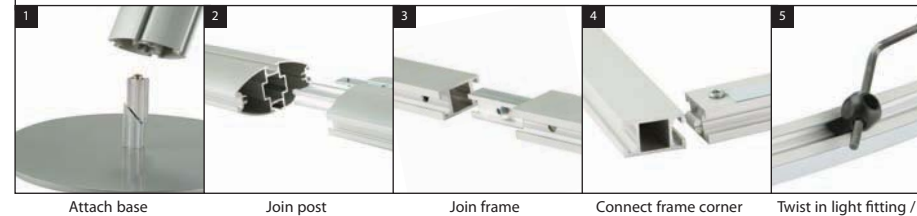
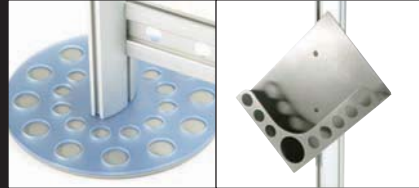
FUSION

MODULAR DISPLAY SYSTEM

FUSION STRAIGHT SYSTEM

AN INNOVATIVE RANGE OF CONTEMPORARY GRAPHIC DISPLAY STRUCTURES. FEATURES INCLUDE SLEEK SATIN ANODISED ALUMINIUM PROFILES AND MAGNETICALLY MOUNTED GRAPHIC PANELS FOR A SMOOTH SEAMLESS APPEARANCE. WIDE SELECTION OF SYSTEM CONFIGURATIONS AVAILABLE.

- FEATURES**
- Aluminium frame and posts
 - Steel circular bases
 - Fusion EC - stands for easy carry
 - Fusion EC kit breaks down into lengths no longer than 1000mm
 - A4 portrait / landscape literature units are available
 - Carry bags are available for Fusion & Fusion EC
 - To add individuality red or blue acrylic base covers are available for the steel bases.
 - Light fitting - holds any of the spotlights shown opposite
 - 2000 x 1000mm graphics for straight frames
 - 2000 x 1000mm graphics for inside curve frames
 - 2000 x 1008mm graphics for outside curve frames



Attach base

Join post

Join frame

Connect frame corner

Twist in light fitting /

SYSTEMS

FUSION CURVED SYSTEM



FUSION X SHAPED SYSTEM



Front Runner

1. Koala
2. Savannah
3. Imperial
4. Cornflower
5. Emerald
6. Blaze
7. Coal
8. Silver
9. Regency



Prelude

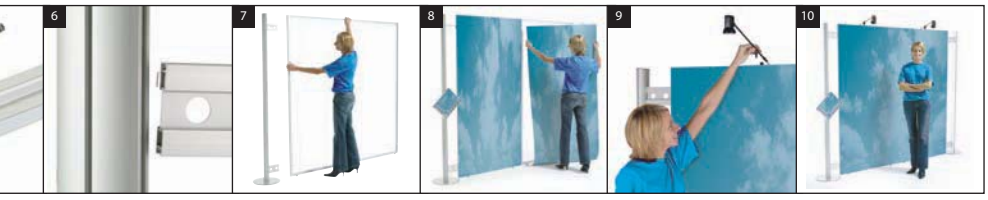
1. Shadow
2. Eclipse
3. Forest
4. Agean
5. Madison
6. Stellar
7. Flame
8. Royal
9. Platinum

Please note : Fabric colours shown are only given as a guide. Slight colour variations may occur between batches of material



1. Helios 3
50w hi spotlight
2. Helios 4
50w hi spotlight
3. Helios 5
50w hi spotlight
4. Helios 7
50w low voltage spotlight
5. Helios 8
50w low voltage spotlight
6. Helios 9
150w halogen flood
7. Helios 10
150w halogen flood

MODULAR DISPLAY SYSTEMS



1. Attach post to frame joiner 2. Secure frame 3. Attaching graphic 4. Fitting light 5. Fully assembled

ALUMINIUM PROFILE

8 CONFIGURATIONS

CURVED AND STRAIGHT

2 YEAR WARRANTY

SPECIFICATIONS

GRAPHIC PANEL SIZE

Straight = 2000 x 1000mm
 Inside curve = 2000 x 1000mm
 Outside curve = 2000 x 1008mm

SYSTEM SIZES

Fusion EC (easy carry) kit components dismantle down to 1000mm long sections

Fusion kit components do not dismantle but are a maximum of 2000mm long

WEIGHTS

Fusion EC post kit inc base (1 post) = 9.6kg
 Fusion post kit inc base (1 post) = 9.5kg
 330mm ø circular base inc. fixing = 5.4kg
 Post to frame joining kit (for 1 post) = 0.4kg
 Fusion EC frame (straight or curved) = 3.4kg
 Fusion frame (straight or curved) = 3.3kg
 Acrylic circular base cover = 0.3kg
 A4 literature dispenser = 1.4kg

COMPONENT LIST

Post

- 2 x 1000mm oval extrusion *
- 1 x 2000mm oval extrusion **
- 2 x Flat joining bar*
- 1 x Post joining spigot*
- 1 x 330mm ø steel base
- 1 x base joining spigot
- 1 x plastic end cap

Straight frame

- 2 x 936mm rectangular extrusion inc. 2 x clamps
- 4 x 998mm rectangular extrusion*
- 2 x 1996mm rectangular extrusion**
- 2 x frame joining spigot*
- 1 x light fitting
- 2 x frame foot
- 6 x length of steel tape
- 1 x plastic hanging extrusion
- 2 x frame joiner (one kit per frame)

Curved frame

- 2 x 938mm curved rectangular extrusion inc. 2 clamps
- 4 x 998mm rectangular extrusion*
- 2 x 1996mm rectangular extrusion**
- 2 x frame joining spigot*
- 1 x light fitting
- 2 x frame foot
- 6 x length of steel tape
- 1 x plastic hanging extrusion
- 2 x frame joiner (one kit per frame)

Frame to Post joining kit

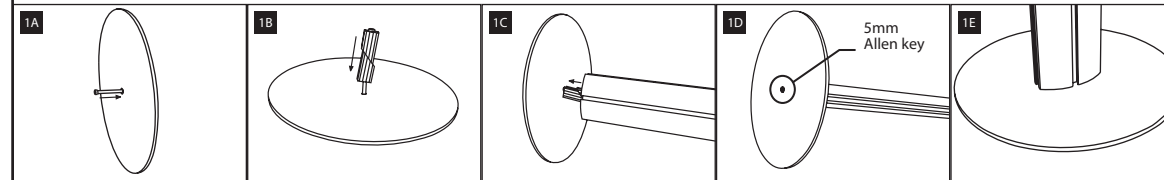
- 2 x 150mm Decorative extrusion inc. 2 x clamps

* Only available with Fusion EC (easy carry) kit
 ** Only available with Fusion kit

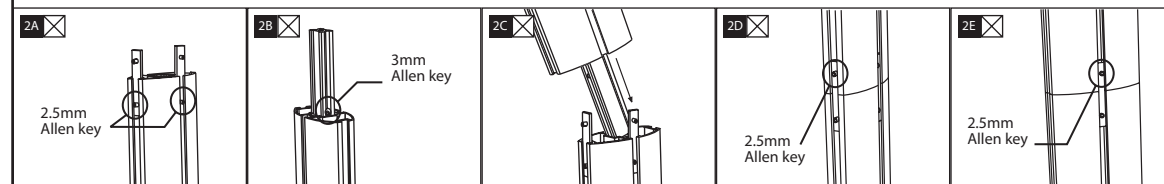
FUSION & FUSION EC (EASY CARRY)

ASSEMBLY INSTRUCTIONS

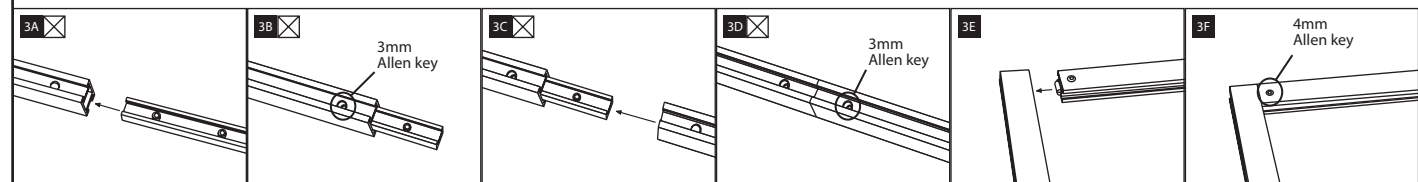
BASE ASSEMBLY (See 5A if using an acrylic base)



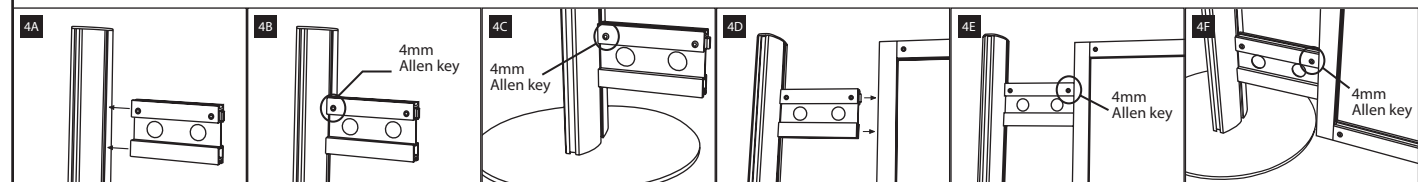
POST ASSEMBLY



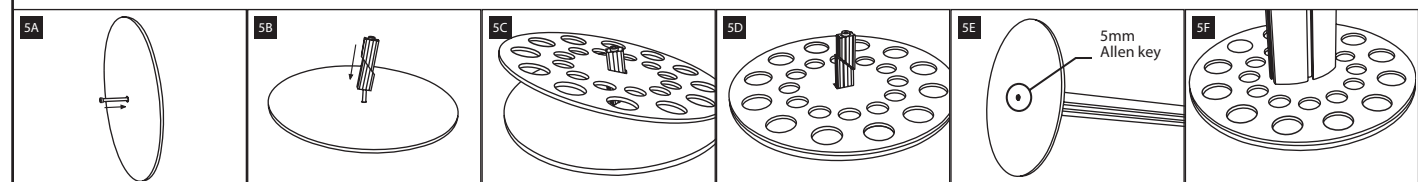
FRAME ASSEMBLY



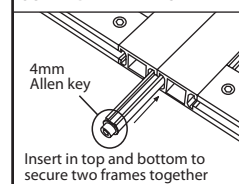
JOINING POST TO FRAME



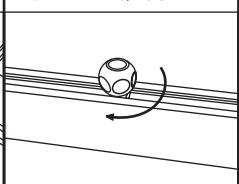
ACRYLIC BASE ASSEMBLY



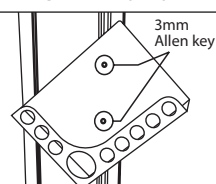
JOINING FRAME TO FRAME



LIGHT FITTING/FOOT



ATTACH LITERATURE UNIT



☒ This step only applies to Fusion EC (Easy Carry) Assembly

